

ENVIROFI

ENVIROFI

“ENVIROfying” the Future Internet

**THE ENVIRONMENTAL OBSERVATION WEB AND ITS
SERVICE APPLICATIONS WITHIN THE FUTURE INTERNET**

Data fusion in the environmental domain

Hylke van der Schaaf

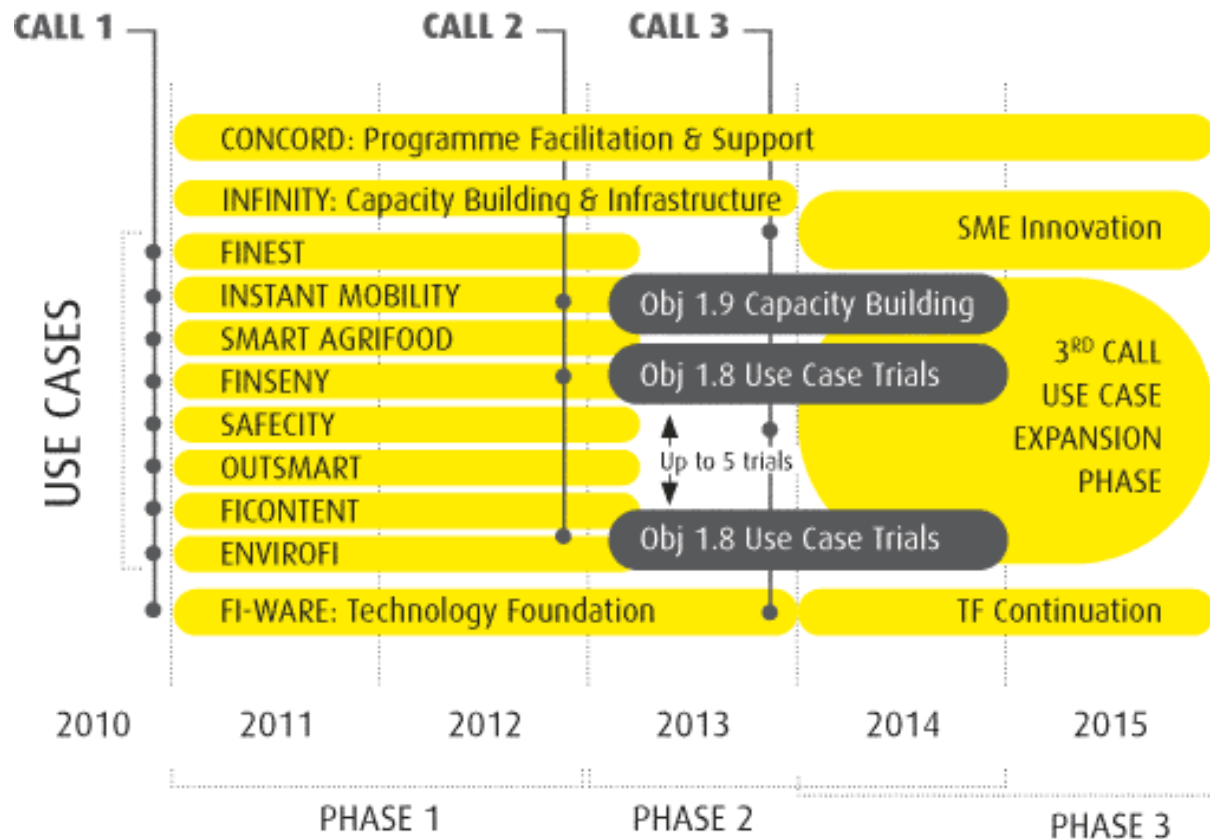
Mike Kobernus, Markus Falgenhauer, Jasmin Pielorz, Kym Watson

ISESS 2013



What is ENVIROFI?

ENVIROFI is part of the FI-PPP Programme:
Future Internet Public-Private Partnership



<http://fi-ppp-eu>

What is ENVIROFI?

- Goal:
Consolidate the **Future Internet requirements** from the *Environmental Usage Area* perspective and provide technical **specifications** and **prototypes** of interoperable geospatial Environmental Enablers
- Prototype areas:
 - Biodiversity
 - Marine Assets
 - Atmospheric Condition

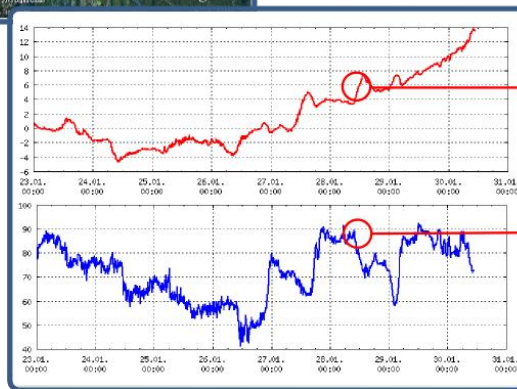
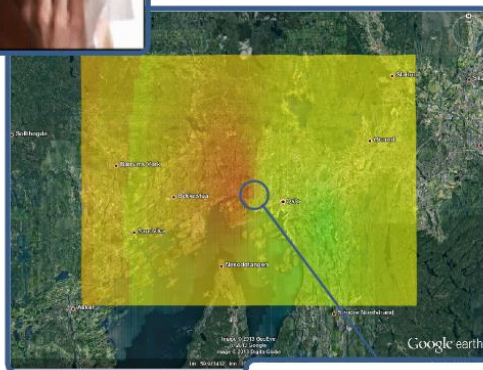


Atmospheric condition

- Everyone breathes
- Each person is different
 - Pollen Sensitivity
 - Asthma
- Current atmospheric information is generic

Personal Environmental Information System

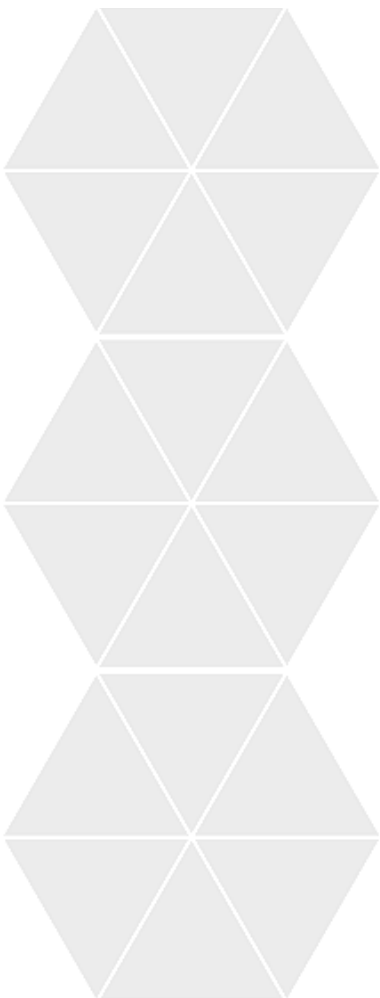
PEIS: Personal Environmental Information System



ALERT!



- Data
 - Air quality
 - Meteorology
 - Pollen
- Location
- Personalised Alerts
- Current & Future events



- Are used extensively
 - Predict future trends
 - Fill in blanks between measurement stations
- Are generally
 - written by domain experts
 - written in Matlab, R or Fortran
- Require specific inputs and parameters
- Have unpredictable run times
- Do not nicely fit in a Service Oriented Architecture

- Meteorological data
- Air quality data
- Pollen data
- Maps
- User authentication
- Notifications

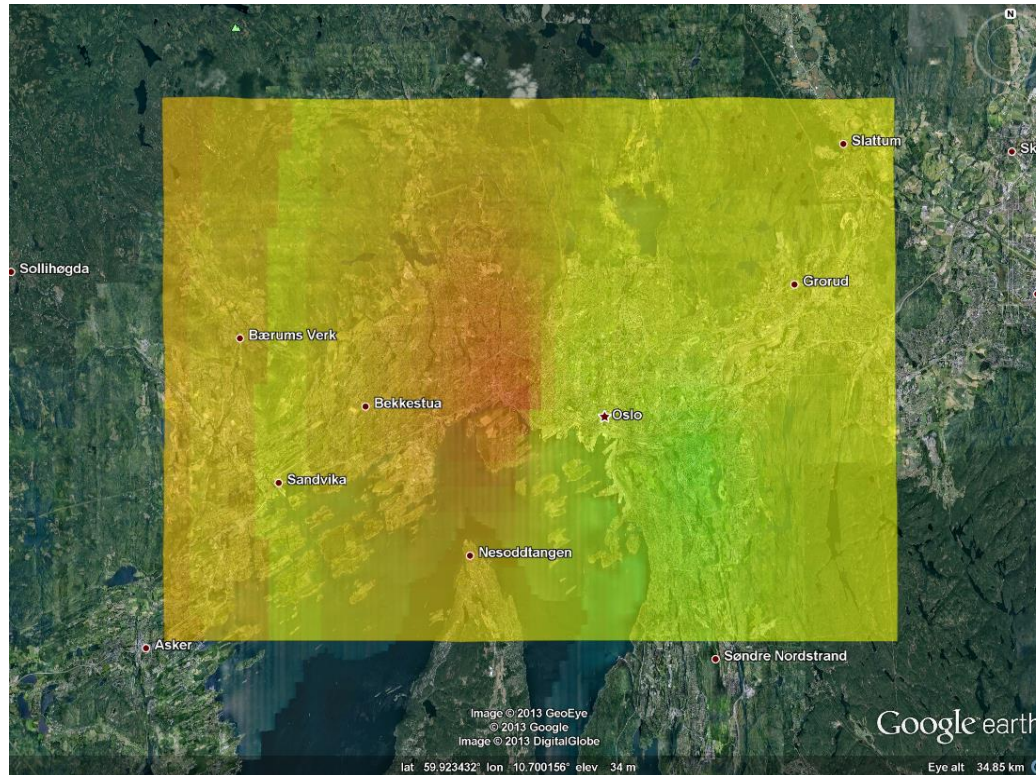
- Model invocations & results?

- **SOS: Sensor Observation Service**
 - Gives access to sensor data
- **SPS: Sensor Processing Service**
 - Gives access to procedures (sensors)
- **WMS: Web Map Service**
 - Gives access to maps

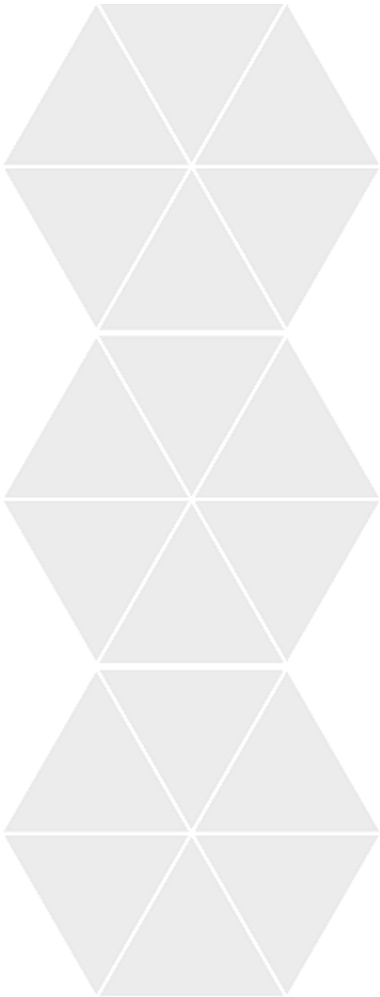
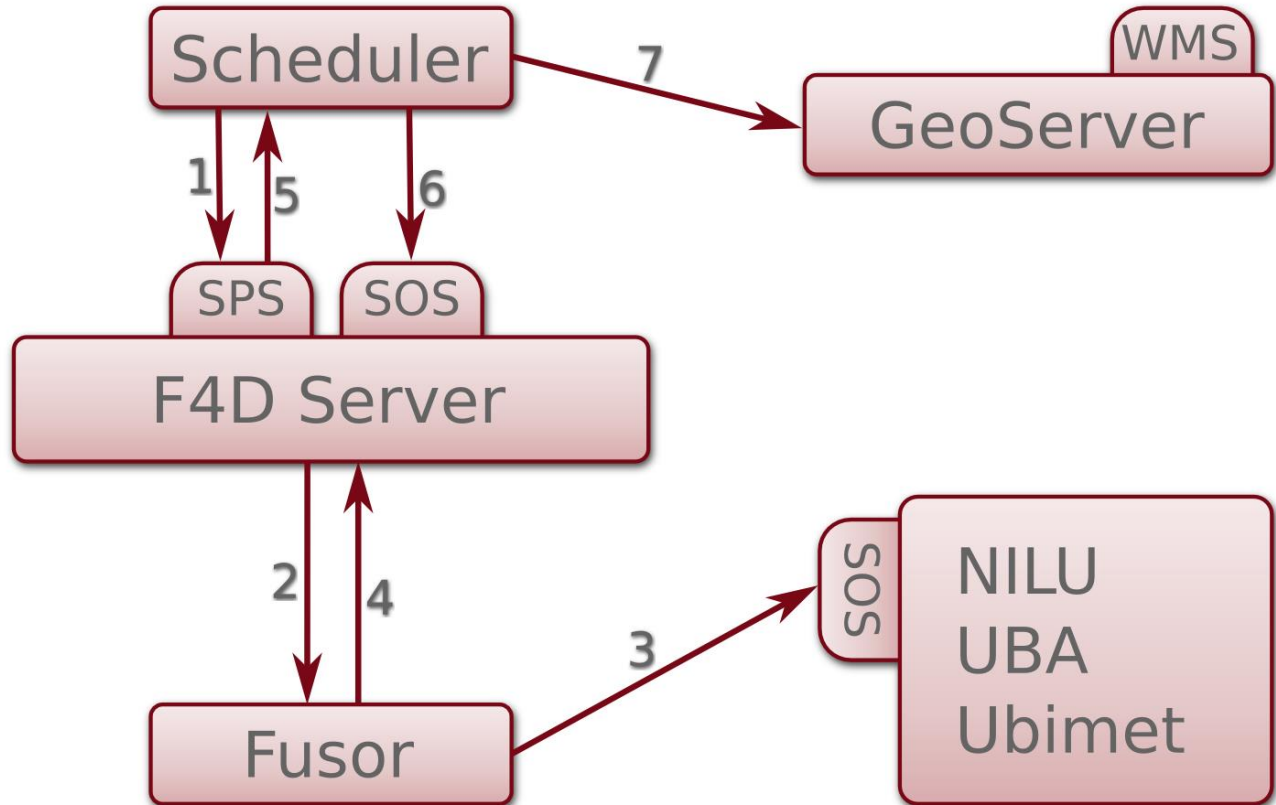
- Treats a model as a sensor
- Makes models available through SPS
 - DescribeTasking
 - GetFeasibility
 - Submit
 - GetStatus
 - Cancel
- Makes model results available through SOS

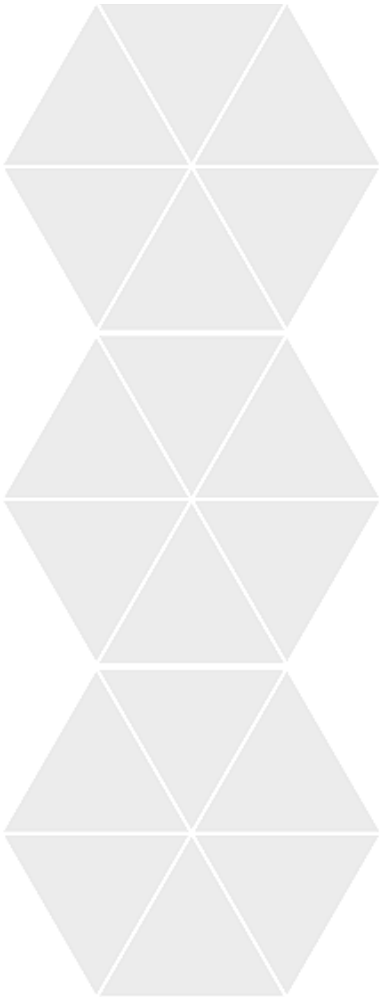
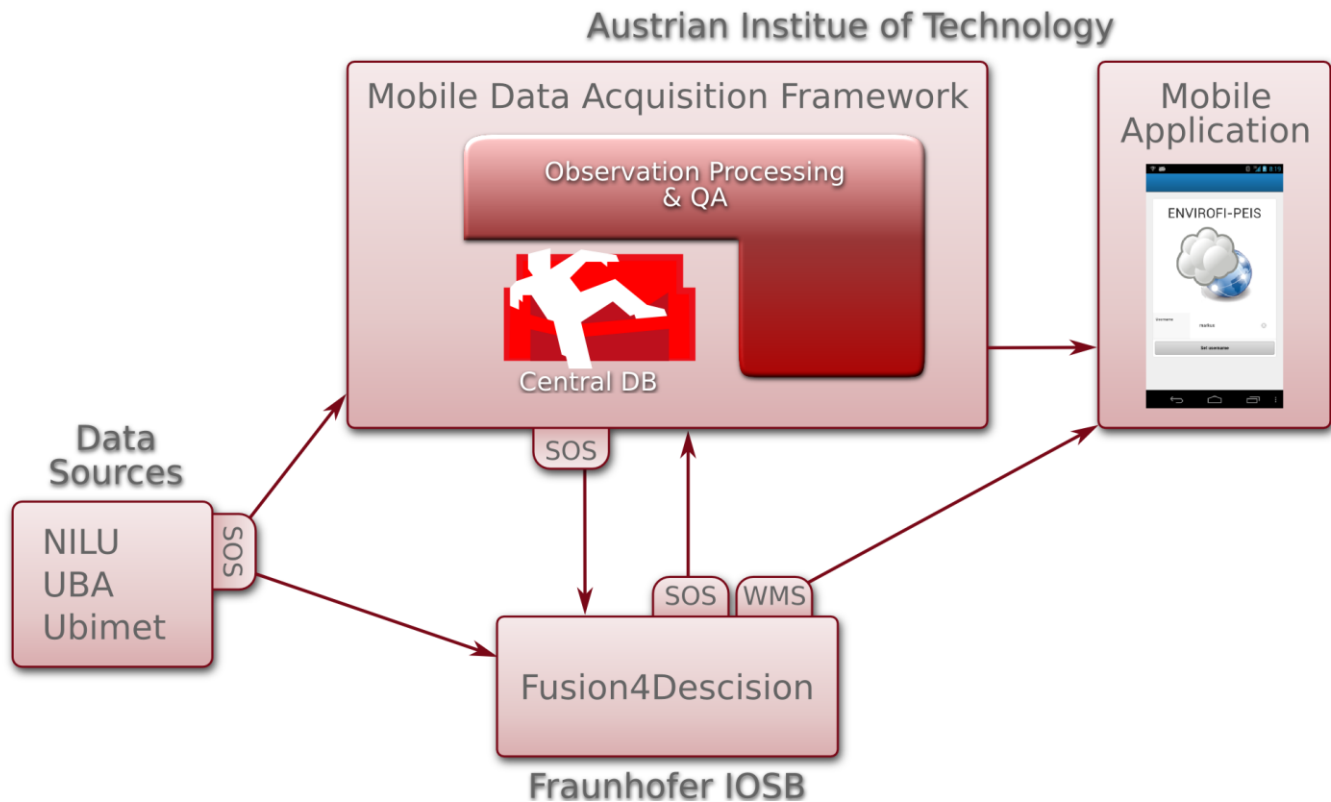
Fusion4Decision in PEIS Prototype

- Download sensor data measured at sensor stations
- Calculate map overlay using Bayesian Maximum Entropy
- Make the map available in a WMS

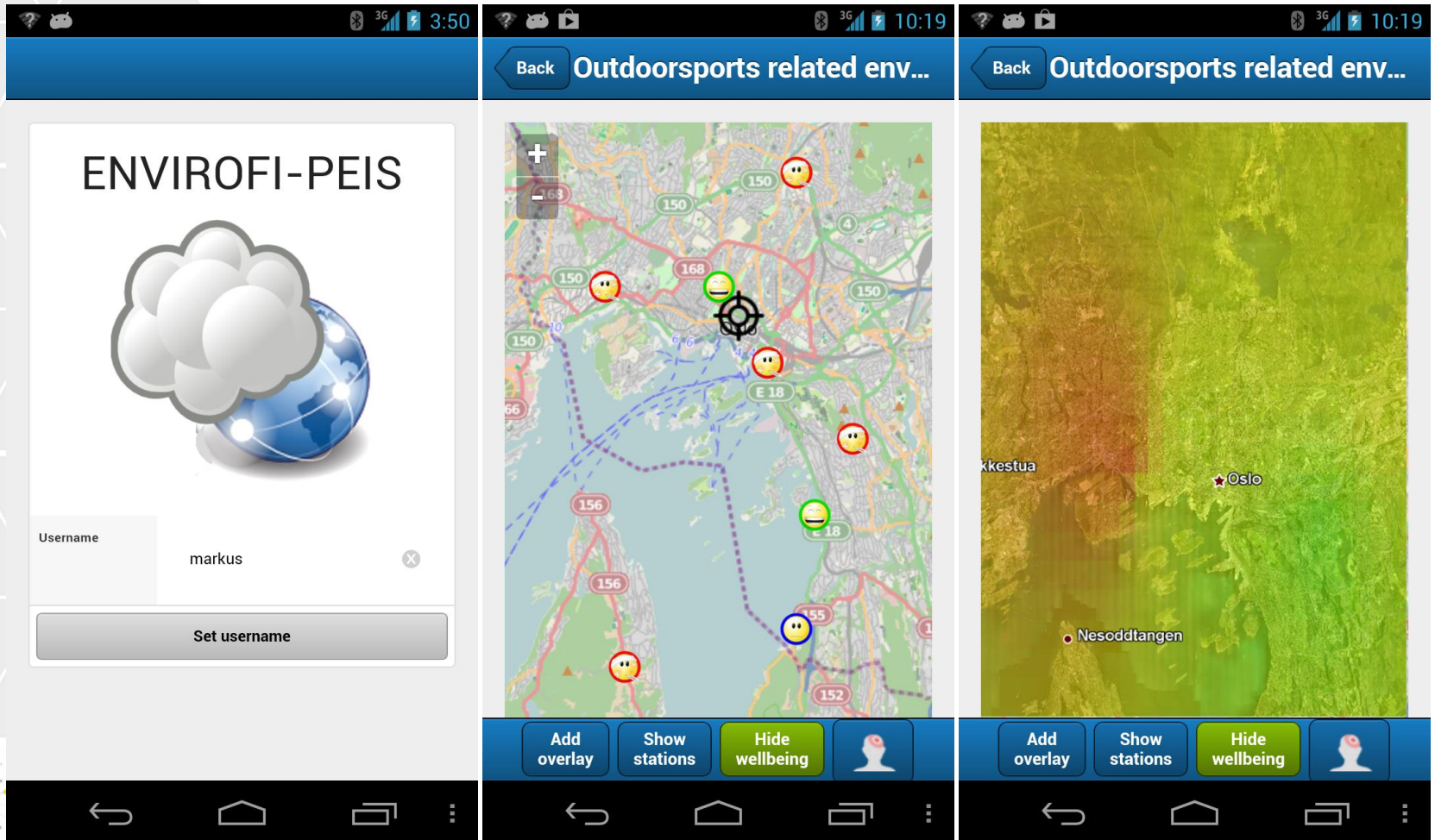


Fusion4Decision in PEIS Prototype





PEIS: Personal Environmental Information System



Thank you for your attention

Hylke van der Schaaf

Hylke.vanderschaaf@iosb.fraunhofer.de

www.envirofi.eu



The research leading to these results has received funding from the European Community's Seventh Framework Programme (FP7/2007-2013) under Grant Agreement Number 284898

